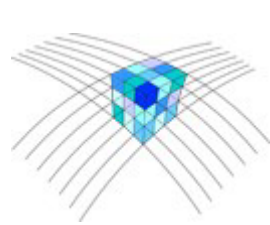


National report of the Netherlands 2017

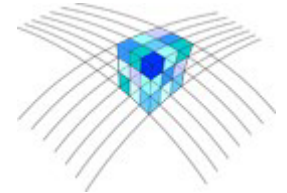
Bas Alberts
Lennard Huisman
Jochem Lesparre
Hans van der Marel



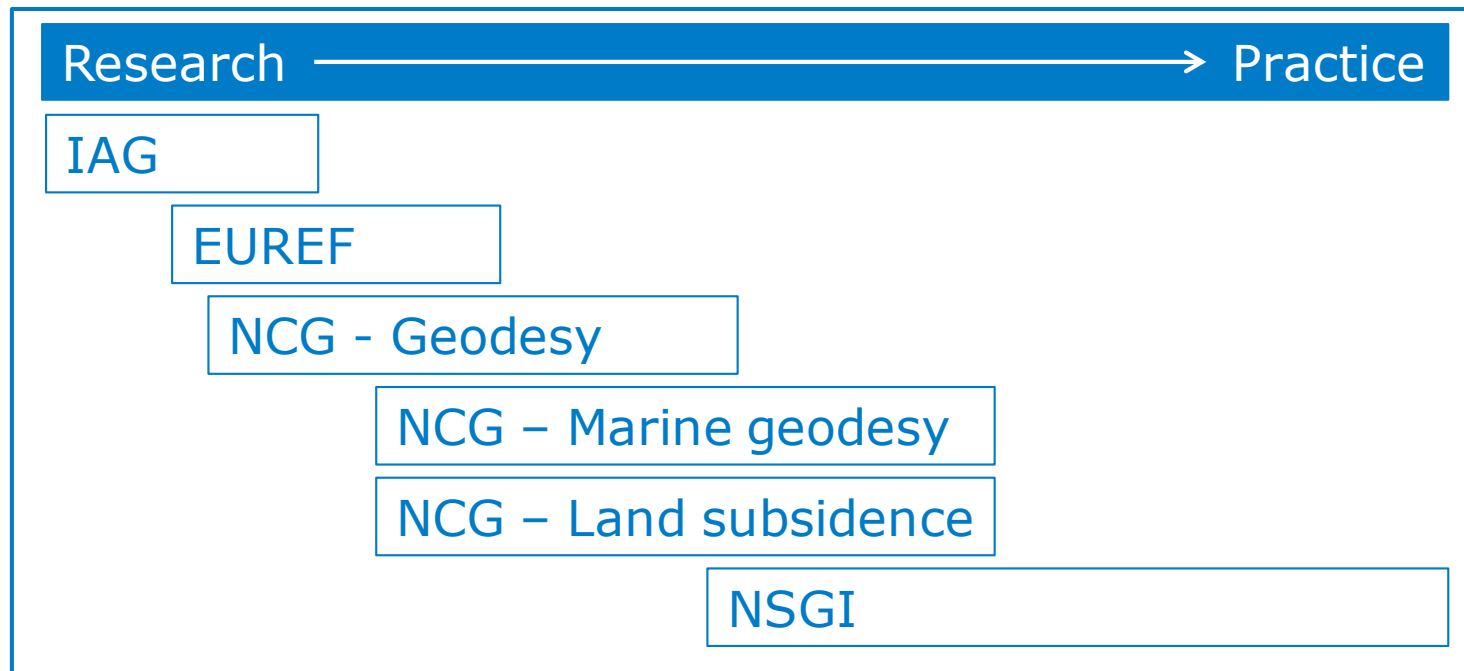
EUREF 2017

Organizational developments

NCG (Dutch Centre for Geodesy and geo-information):

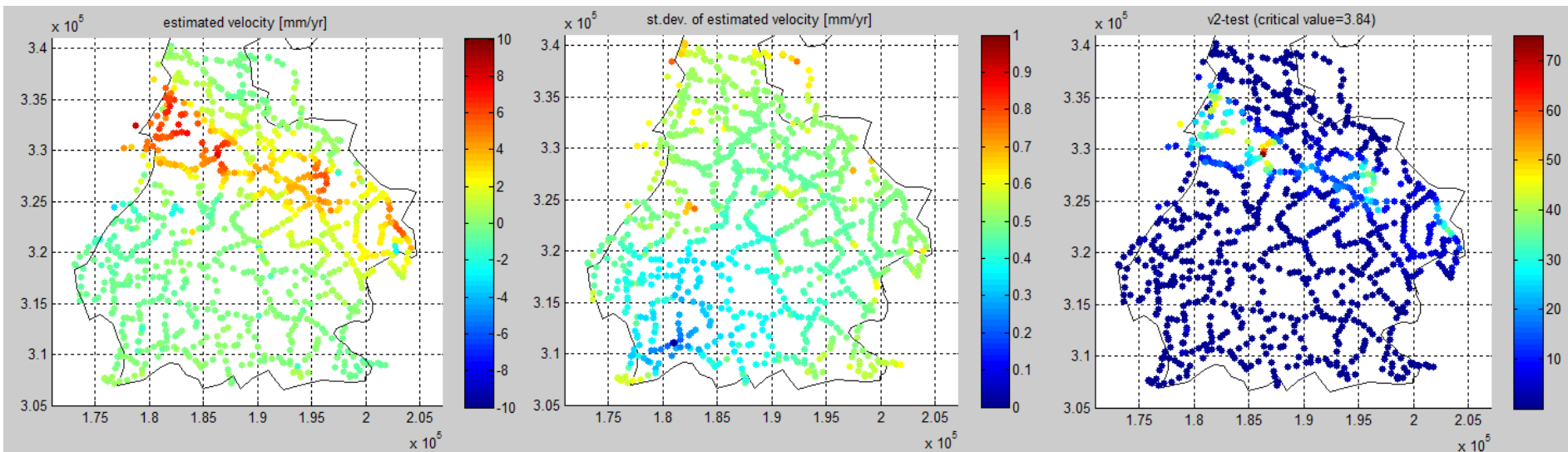
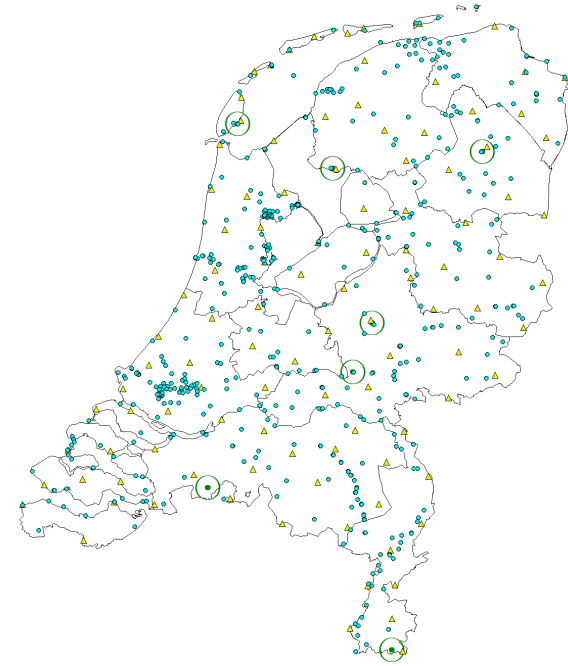


- New commission 'Geodesy'
- Task: to preserve, develop geodetic knowledge and make it applicable



Activities

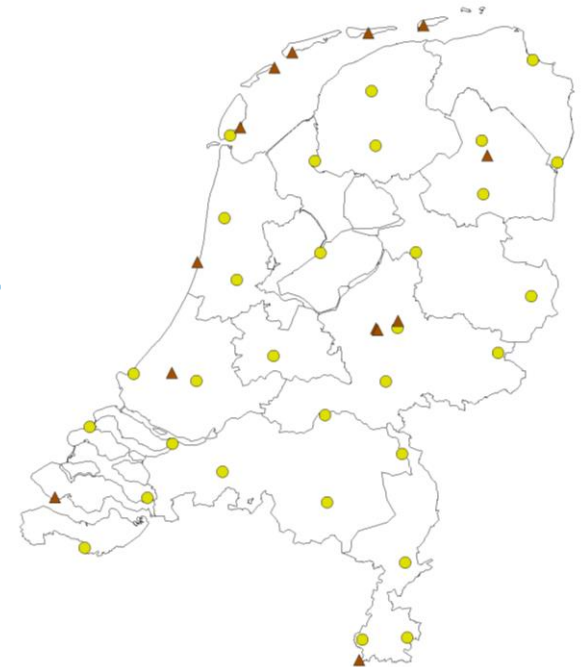
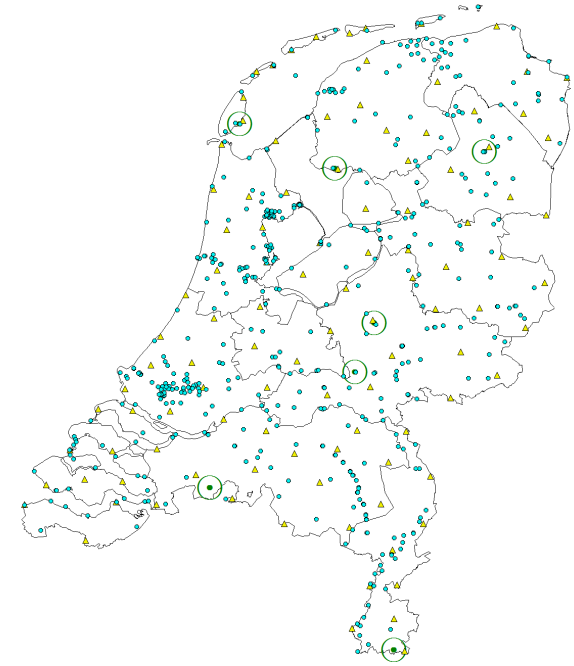
- Leveling (~ 2250 km) in South Holland (subsidence) and Limburg (uplift), including local ties between NAP and GNSS ARPs



Kinematic modeling of epochs 2005, 2012 and 2016

Activities

- Leveling (~ 2250 km) in South Holland (subsidence) and Limburg (uplift), including local ties between NAP and GNSS ARPs
- Absolute gravity measurements at 6 stations
- AGRS.NL: daily and weekly solutions for the active GNSS infrastructure
- Switch to Bernese GNSS Software 5.2 to compute coordinates for GNSS service provider stations (and analyzed differences with BSW5.0)



Projects

NEVREF

New geoid and LAT surface for the Dutch and Belgian continental shelf

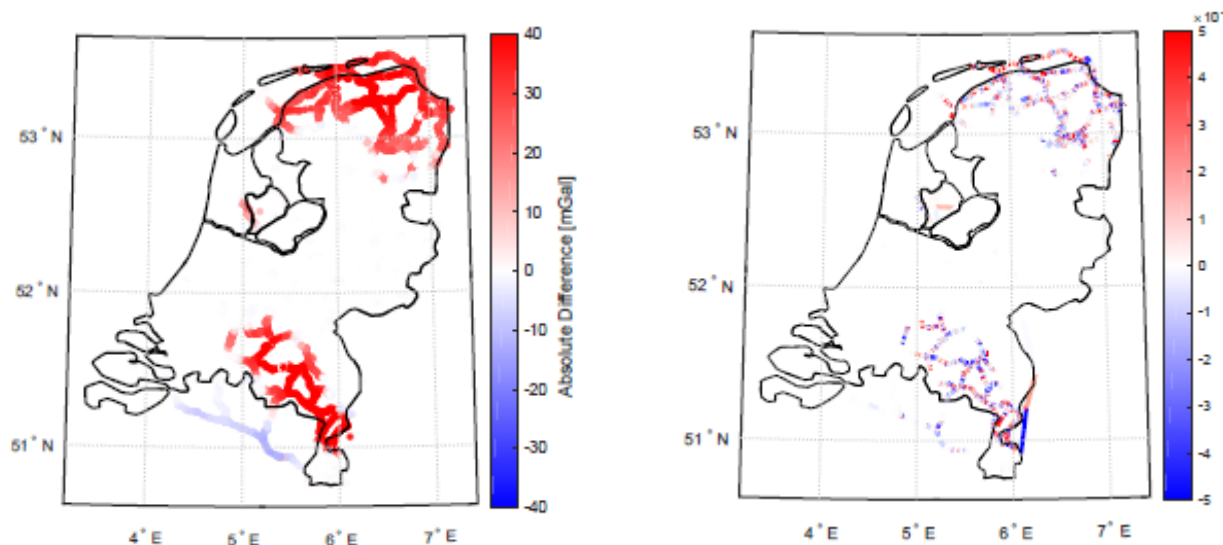
- Preliminary results presented last week; products to be released within the next months
- Accuracy gravimetric geoid: 0.8 cm (st.dev.)
- After applying corrector surface: 0.6 cm (st.dev.)

Projects

NAP-EVRS

Solve the error in geopotential differences
(delivered to BKG in 2004)

- Errors in computed gravity values at height markers

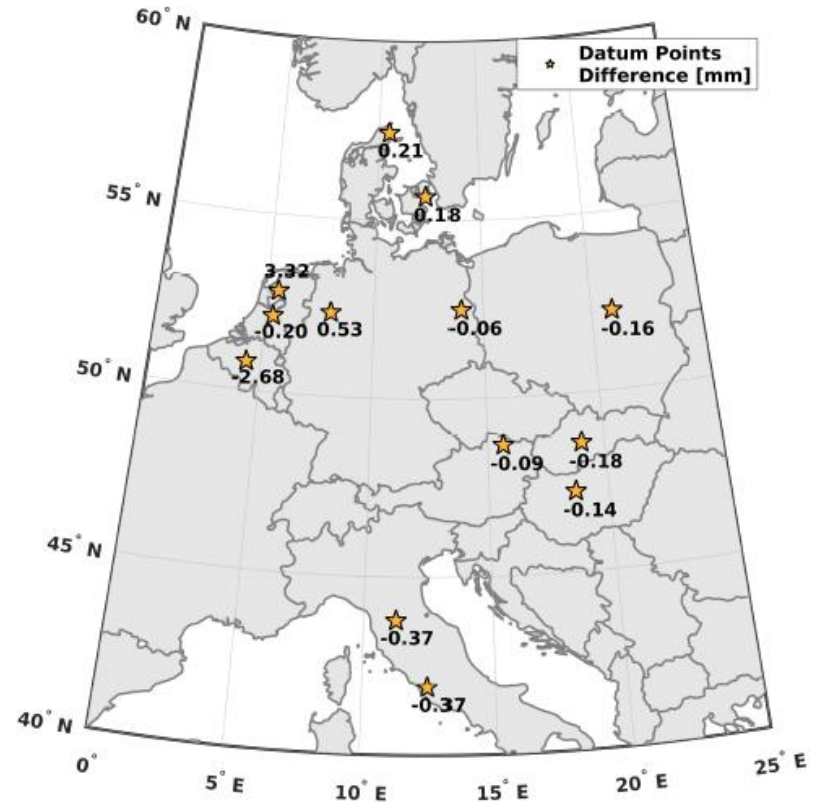
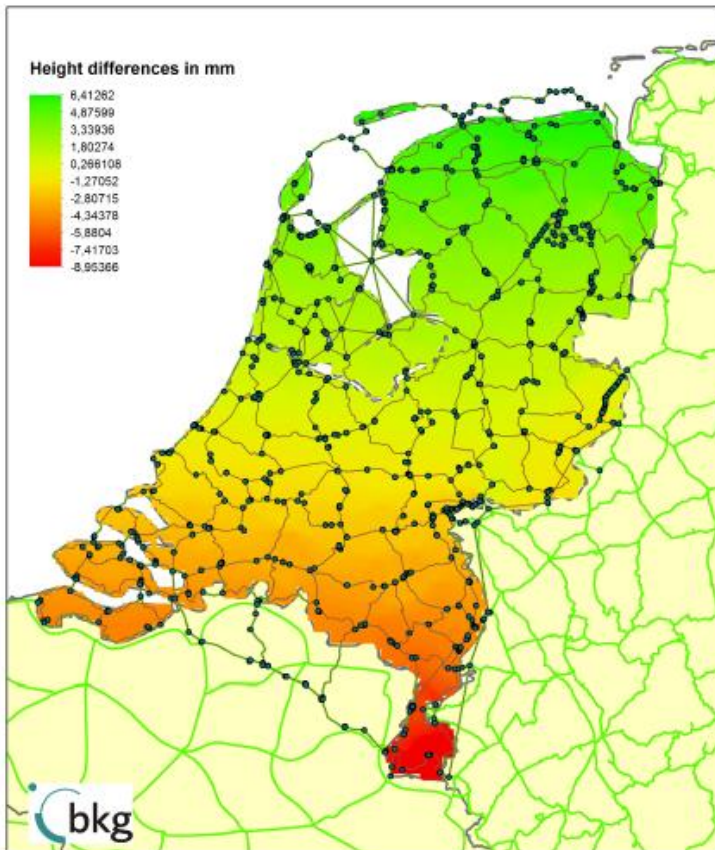


- Leveling observations considered to be in tide-free system instead of mean-tide system

Projects

NAP-EVRS

- Effect on EVRS realization: N-S tilt of 16 mm



(Figures: K. Speth, NAP to EVRS, MSc Thesis)

Projects

NAP-EVRS

- Effect on EVRS realization: N-S tilt of 16 mm
- Only 1 NL-BEL cross-border connection available to BKG

